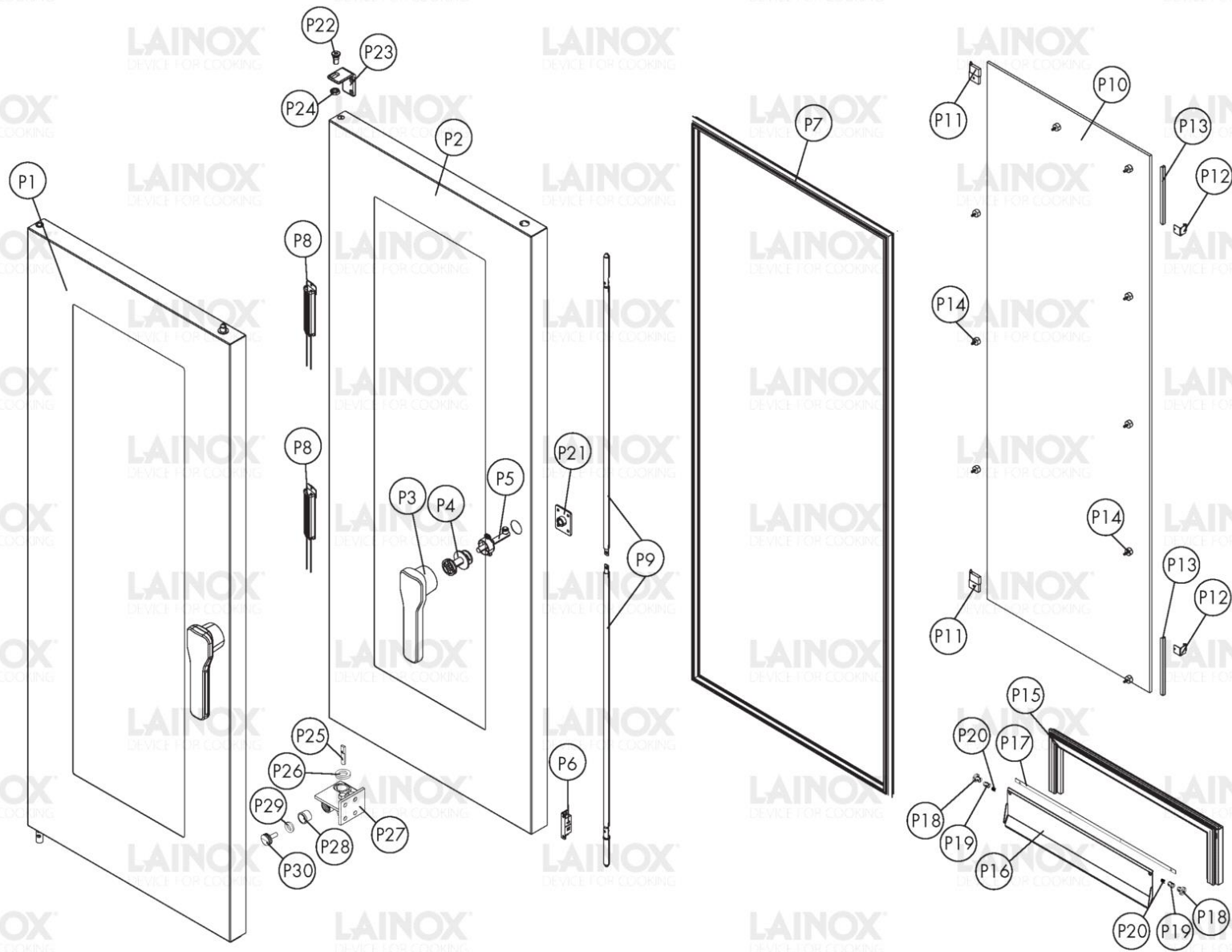


Warning! The exploded views refer to the general model

**TAV. A**

Pos.	Code	Previous code	Description	Notes	From:	To:
0001	LA75300070		PLATE [C] FAN D. 350 N/S101 2014			
0002	LA58003110		PIN [C]			
0003	LA21201710		ASS.DEFLETTORE N2/S2 201			
0004	LA21101660		PREM.FILTRO SCARICO Ã~60 N2/S2			
0005	LA70048131		GUARNIZ.FACC.PORTA N2/S2 201 P.80100611			
0006	LA21201540		ASS.BACIN.RACCOGLIGOCCE PORTA N2/S2 201			
0007	LA58007830		TAPPO PER SFIATO N2/S2			
0008	LA70010320		ANELLO V-SEAL VA-0050 NBR			
0009	LA21201810		ASS.TUBO FASTDRY N2/S2 201/202			
0010	LAR70030180	LA70030180	GRAPHITE GASKETS KIT [C] 80x50,3x3 SET 5 PIECES			
0011	LAR65095000	LA65090220	RELEASE MOTOR [C] COMPLETE - 1 CAM			
0012	LAR65012272		KIT RESISTENZA CIRC.18000W230V CAM			
0013	LA70030200		GASKET [C] HEATING ELEMENTS			
0014	LA61020582		VITE TE A2 M6X60 UNI5737			
0015	LA58004000		SCREW [C] M12X1.5			
0016	LA58004010		WASHER [C] D. 30/12,5			
0017	LAR75401260		KIT VENTOLA Ã~350x120H 12 PALE BRUSHLESS			
0018	LA21400100		COPERCHIO FLANGIA GUARNIZ.MOTORE N2/S2			
0019	LA70020080		GUARNIZIONE MOTORE			
0020	LA58007640		FLANGIA GUARNIZIONE MOTORE			
0021	LAR65045070		KIT MOTORE 750W			
0022	LAR70030190	LA70030190	GRAPHITE GASKETS KIT [C] 90x90x3 SET 5 PIECES			
0023	LA70060050		SILICONE COUPLING [C] D. 60			
0024	LA21101670		PREM.SCAT.CONDENS.N2/S2 201/202			
0025	LA58007650		UGELLO CONDENSAZIONE Ã~1 CODOLO Ã~10			
0026	LA69180610		TUBO SCAR.BACINELLA PORTA C/GUARN.GN1/1			
0027	LA58006160		NOZZLE [C] D. 0,80			
0028	LAR65110210		SOLENOID VALVE [C] 220V 50HZ 2 OUTLETS JG CONNECTION	Mod.without boiler		
0028	LAR65110280		SOLENOID VALVE [C] 220V 50HZ 3 OUTLETS JG CONNECTION	Mod.with boiler		
0030	LA70060170		MANICOTTO SILICONE Ã~I=70 N2/S2 201/202			
0031	LA21200510		ASS.TUBO INT.L=205 N2/S2			
0032	LA70010620		GUARN.UMIDIFICATORE AFM22 44x24			
0033	LA21200480		ASS.TUBO EST.UMIDIFIC. N2/S2 201/202			
0034	LAR65320220	LA65320220	PROBE [C] K L. 1,5M			
0035	LA65241050		DISTANZ.SILICONE SCHEDA ELETT.L=9.5 MM			

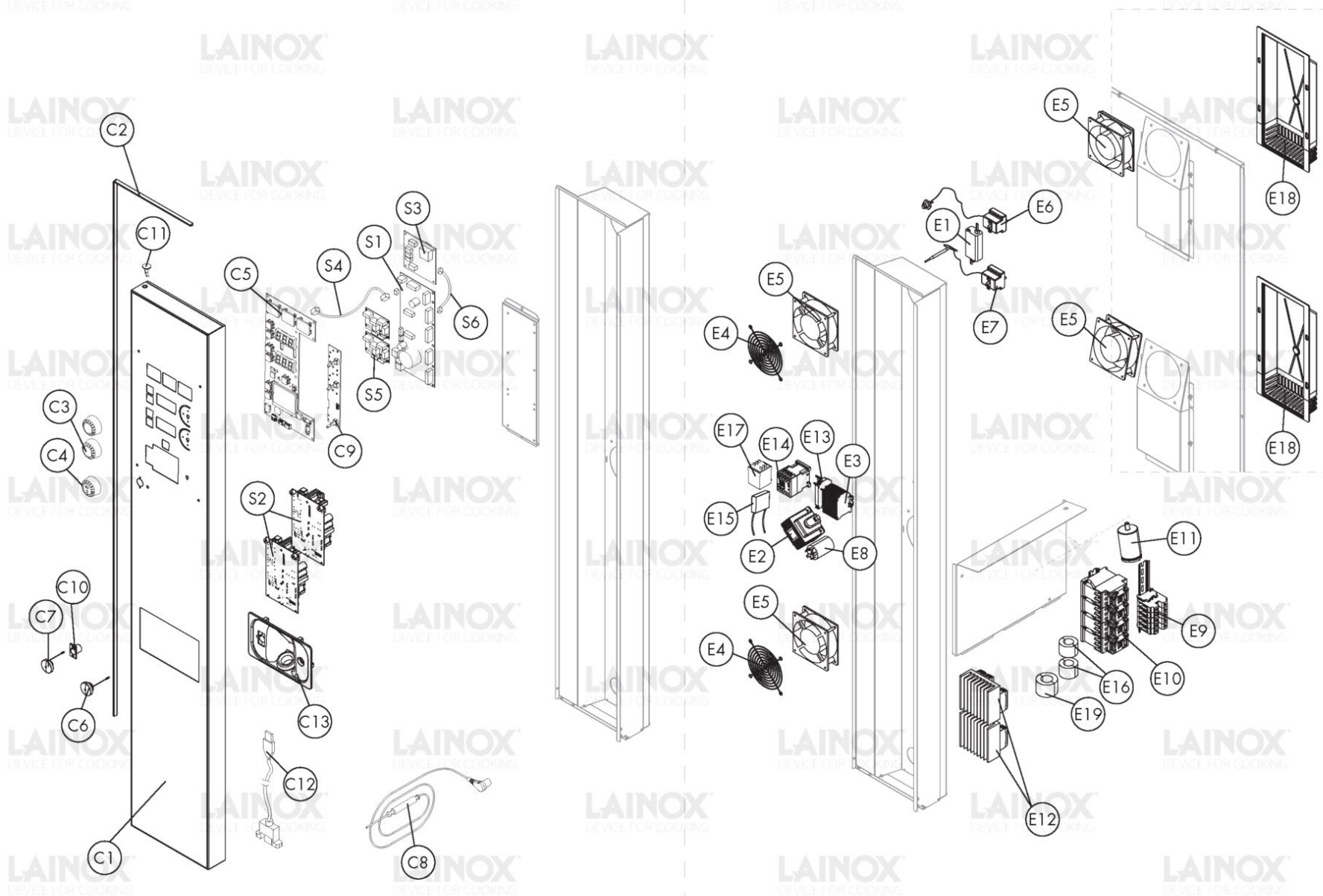
Pos.	Code	Previous code	Description	Notes	From:	To:
0036	LA14425200		HANDLE [C] TROLLEY KS/T21			
0037	LA69090480	LA69090360	BLACK CASTOR ROTATING DOUBLE D.100			
0038	LA69090470	LA69090350	BLACK CASTOR ROTATING DOUBLE D.100			
0039	LA21404070		FIANCO N2/S2 201			
0040	LA21103520		PREM.ZOCCOLO N2/S2 201			
0040	LAR69110070		KIT SOSTITUZ.MAGNETI ZOCC.N2/S2			
0041	LA14170880		PREM.PRESSOSTATO DIST.ACQUA N/S S/BOILER	Mod.without boiler		
0043	LA62090928		CURVED CONNECTOR [C] D.10			



Warning! The exploded views refer to the general model

**TAV. B**

Pos.	Code	Previous code	Description	Notes	From:	To:
00P1	LA21101700		PREM.PORTA N2/S2 201 LAINOX			
00P2	LA21202290		ASS.PORTA N2/S2 201 C/LOGO			
00P3	LA69011120		HANDLE [C]			
00P4	LAR21202310		ASS.CODOLO MANIGLIA N2/S2 201/202			
00P5	LAR21105850		ASS.GANCIO PERNO MANIGLIA N2/S2 201/202			
00P5	LAR21202300		ASS.PERNO MANIGLIA N2/S2 201/202			
00P7	LA80100101		PROFILE [C]			
00P8	LA65270590		LED LAMP L=130MM 12V DC [C]			
00P9	LA11207670		ROD [C] K_201-202			
0P10	LAR71203050B		VETRO POSTERIORE PORTA N2/S2 201			
0P12	LA17406231		CLIP [C] BLOCK GLASS DOOR ICON 2019			
0P13	LA11411860		PROTECTION [C] DOOR GLASS M-V/201-202			
0P14	LAR70050180	LA70050180	SPACER [C] GLASS PLATE 15X8 (min.10 pcs or multiples)			
0P15	LA70048080		TELAIO GUARN. CARR. A INCASTRO N/S-L 201			
0P16	LA14441630		BANDELLA DI TAMPONAMENTO T21 2011			
0P17	LA80100910		PROFILE [C]			
0P18	LA58006861		.			
0P19	LA58006910		CLOSING PLATE ROTATION PIVOT [C]			
0P20	LAR65491250		SPRING [C] CLOSING PLATE			
0P21	LA03200970		FLANGE [C] REAR BUSH			
0P22	LA58002150		UPPER PIN [C] HINGE M/106-220			
0P23	LA11401410		CERNIERA SUPER.PORTA SR.2000 .			
0P24	LA58004050		NUT [C]			
0P25	LA58002540		CHIAVETTA X PERNO C/FERMO PORTM-V/120-22			
0P26	LA58002570		WASHER [C] 15X3			
0P27	LAR11205390		LOWER HINGE KIT [C] M-V/201-202			
0P27	LAR21202650		ASS.CERNIERA INFERIORE N2/S2 201/202 LLG	(LLG - Long Life Gasket)		
0P28	LA58002550		GUIDE SHOE [C]			
0P29	LA61620091		SPRING [C] D.14/6,4X0,8 C70			
0P30	LA58002560		CATCH [C] DOOR			



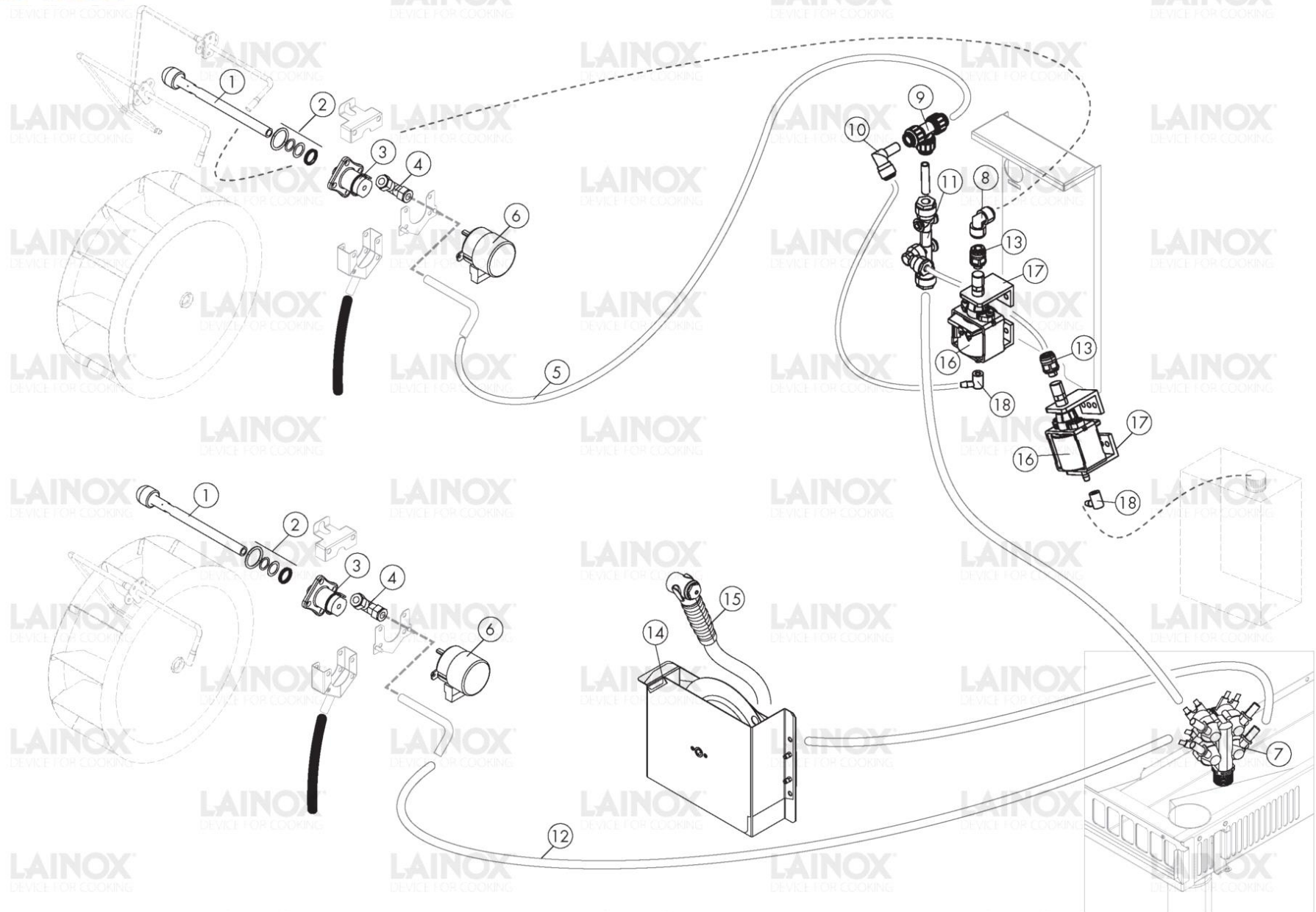
Warning! The exploded views refer to the general model

**TAV. C**

Pos.	Code	Previous code	Description	Notes	From:	To:
00C1	LAR21201550FS		ASS.CRUSCOTTO S2 201/202 FRANSTAL			
00C1	LAR21201550LX		ASS.CRUSCOTTO S2 201/202 LAINOX			
00C2	LA80100101		PROFILE [C]			
00C3	LA69030380		ENCODER [C] KNOB D. 46			
00C4	LA69030400		ENCODER [C] KNOB D. 46 W/LOGO			
00C5	LA65303400		SCHEDA TASTIERA VERTICALE S BOOST+CAVO			
00C6	LA65321310		CAP [C] USB SOCKET			
00C7	LA65321331		ASS.TAPPO PER PRESA SONDA A/C N/S 2020			
00C8	LA65321500		CORE PROBE [C] 4 POINTS 6 PLUG			
00C9	LA65303010		ENCODER BOARD [C] VERTICAL S RELOADED			
00E1	LA65187280		ALIMENTATORE LAMPADA LED APV-12-12 N2/S2			
00E2	LA65180430		TRANSFORMER [C] 40VA 0-220-240/12V			
00E3	LA65210020		FUSE CARRIER [C] 5X20			
00E4	LA75300020		FUN GRID			
00E5	LA65060050		FAN [R] D. 120 4715MS 23T			
00E6	LA65070350		THERMOSTAT [C] 360Å°C-25K			
00E7	LAR65070081		THERMOSTAT [C] BOILER			
00E8	LA65280240		ELECTROMECHANICAL FILTER [C]			
00E9	LA65220300		TERMINAL BLOCK [C]			
00S1	LA65302980		MAIN BOARD [C] S RELOADED			
00S2	LA65141050		INVERTER BRUSHLESS 500W			
00S3	LA65302260		EXPANSION BOAD [C] S 2009			
00S4	LA65303230		CAVO COLLEG.BASE-TASTIERA L=600			
00S5	LA65303101		SCHEDA ESPANSIONE CONTROLLO SSR SA 2020			
00S7	LA65302680		BUZZER BOARD [C] ICON 2015			
0C10	LA65321530		CONNET.FEMM.S/CUORE 6 PIN L=350 VER.C			
0C11	LA69130670		TAPPO Å~12 IMPERDIBILE GOMMA			
0C12	LA65302600		CONNECTING CABLE [C] BOARD/USB OUTLET L. 850			
0C13	LA14403110		PLATE [C] SHOWER HEAD N/S201 2014			
0E10	LA65140910		CONTACTOR [C] 3RT2025-1AL20			
0E11	LA65280270		FILTRO FLCP566000 3,3ÅµF 0,22nF 1W 475VAC			
0E12	LA65170240		ASS.2xSSR RKD2A60D50CX2H103 C/DISSIPAT.	(Boiler)		
0E12	LA65170250		ASS.1xSSR RKD2A60D50CH103 C/DISSIPAT.	(NO Boiler)		
0E13	LA65210050		FUSE CARRIER [C] 6,3X32			
0E14	LA65140900		CONTACTOR [C]			
0E15	LA65190220		CONDENSER [C] 0,47ÅµF			

Pos.	Code	Previous code	Description	Notes	From:	To:
0E16	LA65280480		FERRITE [C]			
0E17	LA65170100		RELAY [C]			
0E18	LA14424581		OUTER BOX AIR CONVEYOR			
0E19	LA65280520		TOROIDAL FERRITE [C] FT63			

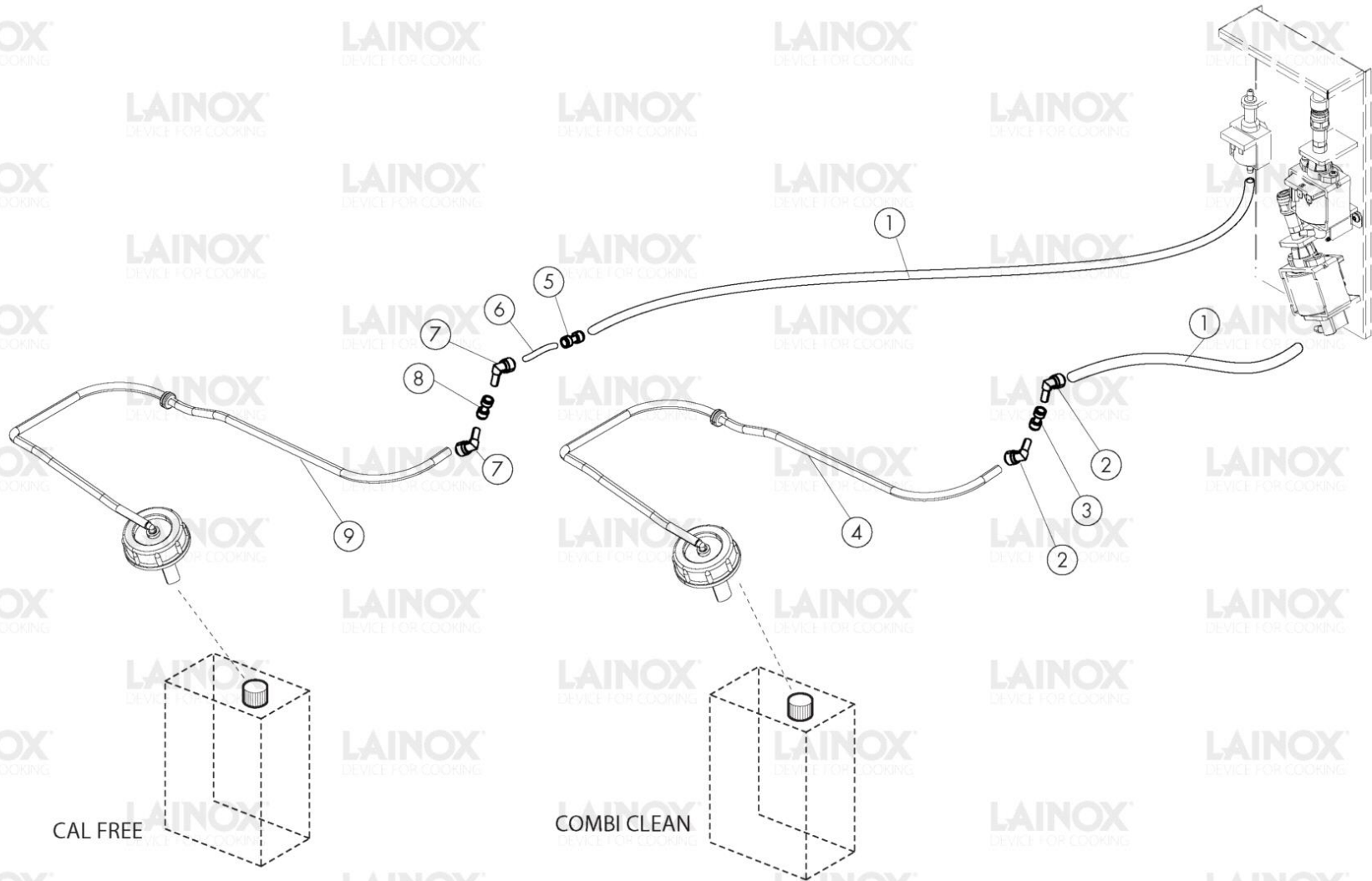




Warning! The exploded views refer to the general model

**TAV. D**

Pos.	Code	Previous code	Description	Notes	From:	To:
0001	LAR58007080		WASHING HEAD [C] L=160 (1/1)			
0002	LAR70045120		GASKET [W] MOB WASHING			
0003	LAR58007020		FLANGE [C] MOB WASHING			
0004	LA62090663		CONNECTOR [C] 10X1/4			
0005	LA80150040		RUBBER PIPE [C] FOOD D. INNER 13 D. EXTERIOR 23			
0006	LAR65090260	LA65090261	GEARMOTOR [C]			
0007	LAR65110270		SOLENOID VALVE [C] 220V 50HZ 4 OUTLETS JG CONNECTION			
0008	LA62090498		INTERMEDIATE CURVED CONNECTOR [C] D. 8			
0009	LA62091018		RACCORDO T JG10 SPEEDFIT PEM0210W			
0010	LA62091038		RIDUZIONE 90° C/CODOLO Å~10-JG8 HLJ1008B			
0011	LA62090888		MANIFOLD [C]			
0012	LA80150000		LIGHT BLUE POLYETHYL PIPE D. 10X7MM			
0013	LA62091028		RACCORDO ATT.RAPIDO JG8-1/8 HPC08G01B			
0014	LA62200180		DOCCIONE AVVOLGIBILE N2/S2			
0015	LA62200220		IMPUGNATURA DOCCIA AVV.N/S 4P.P184.00.00			
0016	LA65110870		PUMP [C] WITH OSCILLATING PISTON			
0017	LA65110880		SUPP.ELLE POMPA FORO PICCOLO 2019			
0018	LA62090980		RACCORDO 90° POMPA HF 801047			



Warning! The exploded views refer to the general model

**TAV. E**

Pos.	Code	Previous code	Description	Notes	From:	To:
0001	LA80150020	LAR80150020	TRANSPARENT POLIURETHANE PIPE [C] D. 8X6MM			
0002	LA62090678	LAR62090678	ELBOW [C]			
0003	LA62090688	LAR62090688	CONNECTOR [C] RING NUT			
0004	LA14171490		KIT CAP YELLOW [C]			
0005	LA62090798	LAR62090798	STRAIGHT REDUCTION [C] D. 8-6			
0006	LA80150030	LAR80150030	LLDPE PIPE [C] D. 6X4MM			
0007	LA62090808	LAR62090808	ELBOW [C]			
0008	LA62090828	LAR62090828	RING NUT [C]			
0009	LA14171500		KIT CAP GREEN [C] CALOUT			

DEVICE FOR COOKING

LAINOX®  
DEVICE FOR COOKING

LAINOX®  
DEVICE FOR COOKING

LAINOX®  
DEVICE FOR COOKING

LAINOX®  
DEVICE FOR COOKING

LAINOX®  
DEVICE FOR COOKING

LAINOX®  
DEVICE FOR COOKING

LAINOX®  
DEVICE FOR COOKING

LAINOX®  
DEVICE FOR COOKING

LAINOX®  
DEVICE FOR COOKING

LAINOX®  
DEVICE FOR COOKING

LAINOX®  
DEVICE FOR COOKING

LAINOX®  
DEVICE FOR COOKING

LAINOX®  
DEVICE FOR COOKING

LAINOX®  
DEVICE FOR COOKING

LAINOX®  
DEVICE FOR COOKING

LAINOX®  
DEVICE FOR COOKING

LAINOX®  
DEVICE FOR COOKING

LAINOX®  
DEVICE FOR COOKING

LAINOX®  
DEVICE FOR COOKING

LAINOX®  
DEVICE FOR COOKING

LAINOX®  
DEVICE FOR COOKING

LAINOX®  
DEVICE FOR COOKING

LAINOX®  
DEVICE FOR COOKING

LAINOX®  
DEVICE FOR COOKING

LAINOX®  
DEVICE FOR COOKING

LAINOX®  
DEVICE FOR COOKING

LAINOX®  
DEVICE FOR COOKING

LAINOX®  
DEVICE FOR COOKING

LAINOX®  
DEVICE FOR COOKING

LAINOX®  
DEVICE FOR COOKING

LAINOX®  
DEVICE FOR COOKING

LAINOX®  
DEVICE FOR COOKING

LAINOX®  
DEVICE FOR COOKING

LAINOX®  
DEVICE FOR COOKING

LAINOX®  
DEVICE FOR COOKING

LAINOX®  
DEVICE FOR COOKING

LAINOX®  
DEVICE FOR COOKING

LAINOX®  
DEVICE FOR COOKING

LAINOX®  
DEVICE FOR COOKING

LAINOX®  
DEVICE FOR COOKING

LAINOX®  
DEVICE FOR COOKING

LAINOX®  
DEVICE FOR COOKING

LAINOX®  
DEVICE FOR COOKING

LAINOX®  
DEVICE FOR COOKING

LAINOX®  
DEVICE FOR COOKING

LAINOX®  
DEVICE FOR COOKING

LAINOX®  
DEVICE FOR COOKING

LAINOX®  
DEVICE FOR COOKING

LAINOX®  
DEVICE FOR COOKING

LAINOX®  
DEVICE FOR COOKING

LAINOX®  
DEVICE FOR COOKING

LAINOX®  
DEVICE FOR COOKING

LAINOX®  
DEVICE FOR COOKING

LAINOX®  
DEVICE FOR COOKING

LAINOX®  
DEVICE FOR COOKING

LAINOX®  
DEVICE FOR COOKING

LAINOX®  
DEVICE FOR COOKING

LAINOX®  
DEVICE FOR COOKING

LAINOX®  
DEVICE FOR COOKING

Warning! The exploded views refer to the general model

## TAV. G

Pos.	Code	Previous code	Description	Notes	From:	To:
0002	LA58004030		NUT [C] 1 1/4X10 M/110-210-220			
0003	LA65320010		LEVEL PROBE [C]			
0004	LA65324860		SONDA LIVELLO S/BOCCOLA L=40MM			
0005	LAR65110620	LA65110620	PUMP [C] 230V 50HZ			
0006	LA65110630		SUPPORT [C] PUMP			
0007	LAR65320220	LA65320220	PROBE [C] K L. 1,5M			
0008	LA70045020		GUARNIZIONE RESISTENZA BOILER N2/S2			
0009	LAR65020440		KIT RESISTENZA 18000W230V BOILER			
0010	LA62090918		INTERMEDIATE CURVED CONNECTOR D.10			
0011	LA65110301		POMPA SINCR.220V50HZ30W(GRE MOD.931)2021	50Hz		
0011	LA65110311		POMPA SINCR.220V60HZ30W(GRE MOD.931)2021	60Hz		
0012	LA70060160		MANICOT.SILIC.TELATO ÆE27x2,5 L50 BIANCO			
0013	LA69180760		TUBO SCARICO BOILER N2/S2 G101/102			