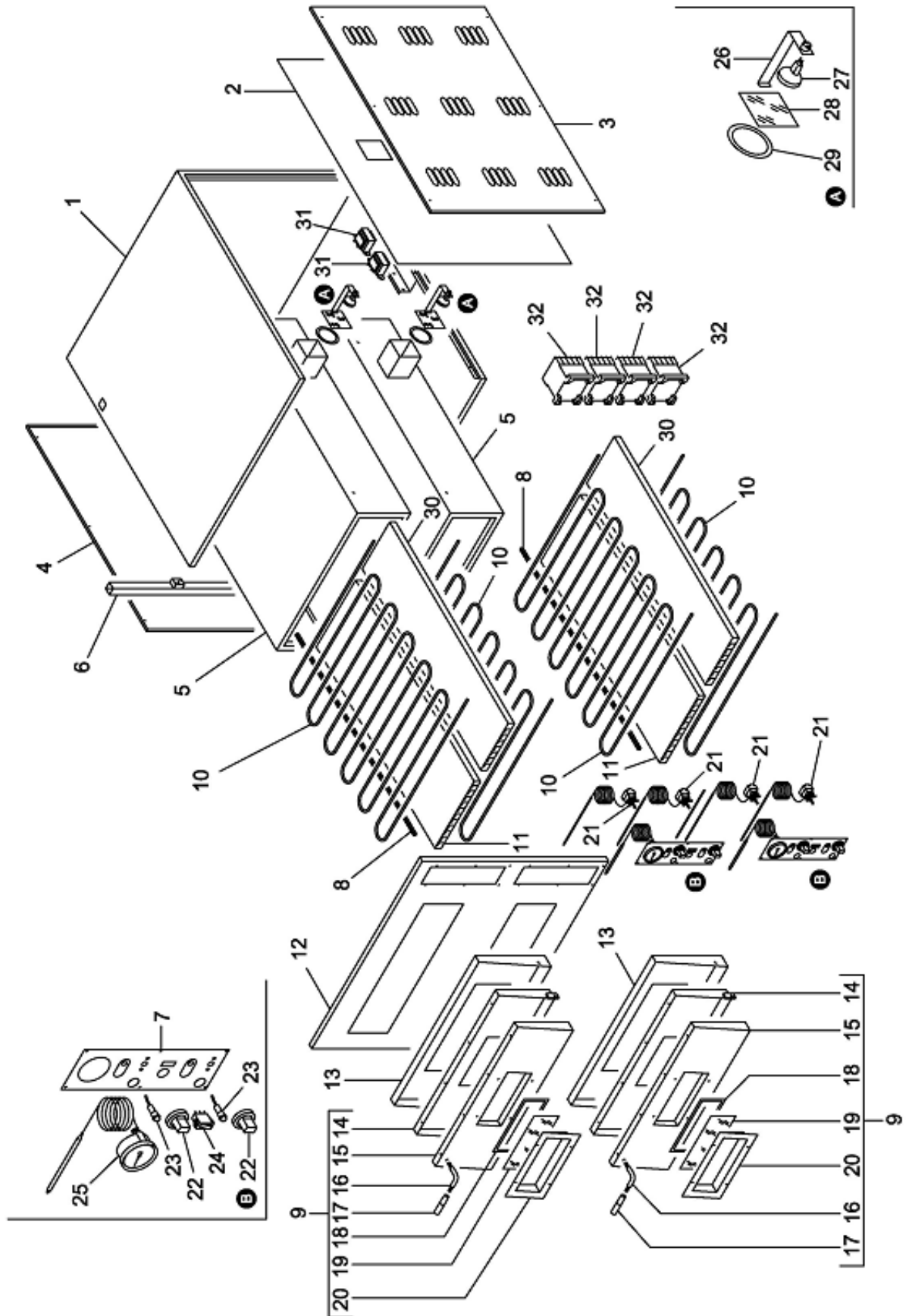


Взрыв-схема Печь для пиццы FME 44



Pos. Ref.	Codice Code	Caratteristiche Features	Descrizione Description	Prezzo netto Net price	
3	CO1227	(FME4-W6)	Copertura	Covering	39,40
3	CO1228	(FME44-W66)	Copertura	Covering	43,00
3	CO1229	(FME6)	Copertura	Covering	34,90
3	CO1230	(FME66)	Copertura	Covering	34,90
3	CO1231	(FME9)	Copertura	Covering	44,70
3	CO1783	(FME99)	Copertura	Covering	54,90
4	CO1232	(FME4-W6)	Copertura	Covering	34,90
4	CO1233	(FME44-W66)	Copertura	Covering	36,20
4	CO1234	(FME6)	Copertura	Covering	43,00
4	CO1235	(FME66)	Copertura	Covering	34,90
4	CO1236	(FME9)	Copertura	Covering	43,00
4	CO1784	(FME99)	Copertura	Covering	51,30
7	SL3700		Etichetta	Label	5,00
8	CO1244	(FME4-44-W6-W66)	Asta	Rod	9,00
8	CO1245	(FME6-66)	Asta	Rod	9,00
8	CO1246	(FME9-99)	Asta	Rod	9,00
9	CO1264	Assembly Stainless steel (FME4-44-6-66)	Sportello	Door	129,50
9	CO1265	Assembly Rustic (FME4-44-6-66)	Sportello	Door	129,20
9	CO1266	Assembly Stainless steel (FMEW6-W66-9-99)	Sportello	Door	147,90
9	CO1267	Assembly Rustic (FMEW6-W66-9-99)	Sportello	Door	147,90
10	CO3651	● 230V/1Ph/50-60Hz (FME4-44)	Resistenza	Resistance	47,20
10	CO3652	● 230V/1Ph/50-60Hz (FME6-66)	Resistenza	Resistance	45,50
10	CO3653	● 230V/1Ph/50-60Hz (FMEW6-W66-9-99)	Resistenza	Resistance	34,10
11	CO2858		Piana	Stone	37,40
11	CO1274	01/06/07 f.p.(*) (FME4-44)	Piana	Stone	39,70
11	CO1275	01/06/07 f.p.(*) (FME6-66-9-99)	Piana	Stone	96,60
13	CO1254	(FME4-44-6-66)	Telaio	Frame	47,50
13	CO1255	(FMEW6-W66-9-99)	Telaio	Frame	63,00
14	CO1256	(FME4-44-6-66)	Sportello	Door	52,20
14	CO1257	(FMEW6-W66-9-99)	Sportello	Door	60,30
15	CO1258	Stainless steel (FME4-44-6-66)	Sportello	Door	38,00
15	CO1259	Rustic (FME4-44-6-66)	Sportello	Door	44,00
15	CO1260	Stainless steel (FMEW6-W66-9-99)	Sportello	Door	56,60
15	CO1261	Rustic (FMEW6-W66-9-99)	Sportello	Door	43,00
16	CO1214	(FME4-44-6-66)	Supporto	Support	13,10
17	CO1215	(FME4-44-6-66)	Maniglia	Handle	5,70
17	CO1789	(FMEW6-W66-9-99)	Maniglia	Handle	13,60
18	CO2909		Guarnizione	Gasket	5,00
18	CO1262	15/01/08 f.p.(*)	Guarnizione	Gasket	4,90
19	CO4735	●	Vetro	Glass	25,00
19	CO1200	15/01/08 f.p.(*)	Vetro	Glass	19,40
20	CO0865		Cornice	Moulding glass	32,30
20	CO1263	15/01/08 f.p.(*)	Cornice	Moulding glass	32,30
21	CO3601	● (FME4-44-6-66-W6-W66)	Termostato	Thermostat	23,70
21	CO3602	● (FME9-99)	Termostato	Thermostat	61,70
22	SL3550		Pomello	Knob	2,50
23	32W2970	● 230V 2W	Lampada	Lamp	1,50
24	CO1269	●	Interruttore	Switch	5,90
25	CO1270	●	Pirometro	Pyrometer	62,00
26	CO2026		Supporto	Support	6,30
26	CO1271	01/01/03 f.p.(*)	Supporto	Support	4,70
27	CO1979	● 12V (Halogen)	Lampada	Lamp	11,40
27	CO1272	01/01/03 f.p.(*)	Lampada	Lamp	16,40
28	CO3318		Vetro	Glass	11,10
28	CO1273	01/01/03 f.p.(*)	Vetro	Glass	6,80
29	CO3329		Guarnizione	Gasket	2,30
30	CO3312	(FME9-99)	Piana	Stone	62,20
30	CO1276	01/06/07 f.p.(*) (FME9-99)	Piana	Stone	59,80
31	CO1980	12V	Trasformatore	Transformer	20,40
32	CO3333	(FME9-99)	Teleinterruttore	Remote control switch	27,00

(*): fuori produzione / out of production

● : ricambio consigliato / spare part suggested