

Turbovac Mobile Range

1st choice for professionals within
the food and packaging industry



M40 - M50 - M60 - M70 - M80

Mobile Range



Specifications

M40

M50

M60

STAINLESS STEEL COVER | FLAT WORKING SURFACE

Seal	Double	Double
Machine dimension mm	740 x 760 x 1130	940 x 870 x 1140
Standard voltage	400 - 3 - 50 Hz	400 - 3 - 50 Hz
Digital Time Control	10 programs	10 programs
Pump Capacity	40 m3	63 m3
Average weight	192 kg	308 kg

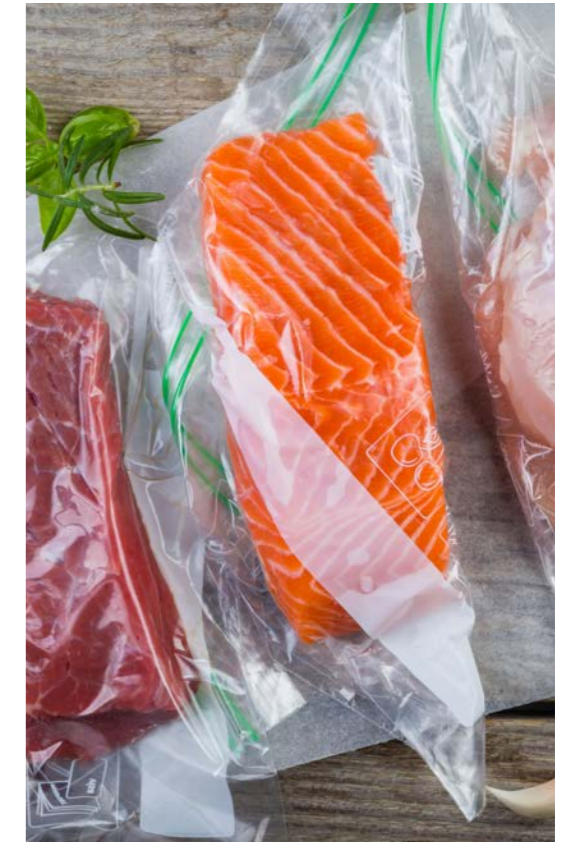
Options

Filler plates / Liquid filler plates	Yes	Yes
Sensor control	Sensor / H ₂ O	Sensor / H ₂ O
Soft Air	Soft Air	Soft Air
Seal	Trenn (pre-cut) / 1-2 / Bi-Active	Trenn (pre-cut) / 1-2 / Bi-Active
Gas	Gas	Gas
Pump upgrade	63 m3	100 or 160 m3
Voltage according to Pump upgrade	400 - 3 - 50 Hz	400 - 3 - 50 Hz

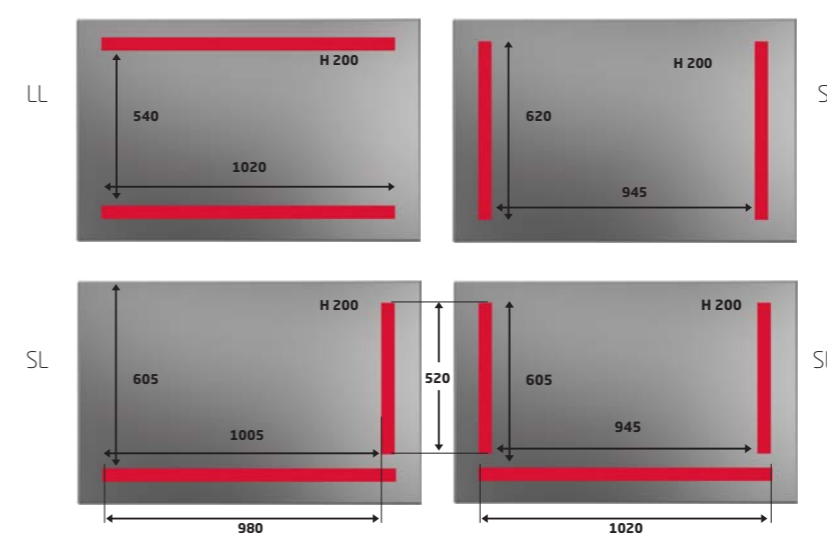
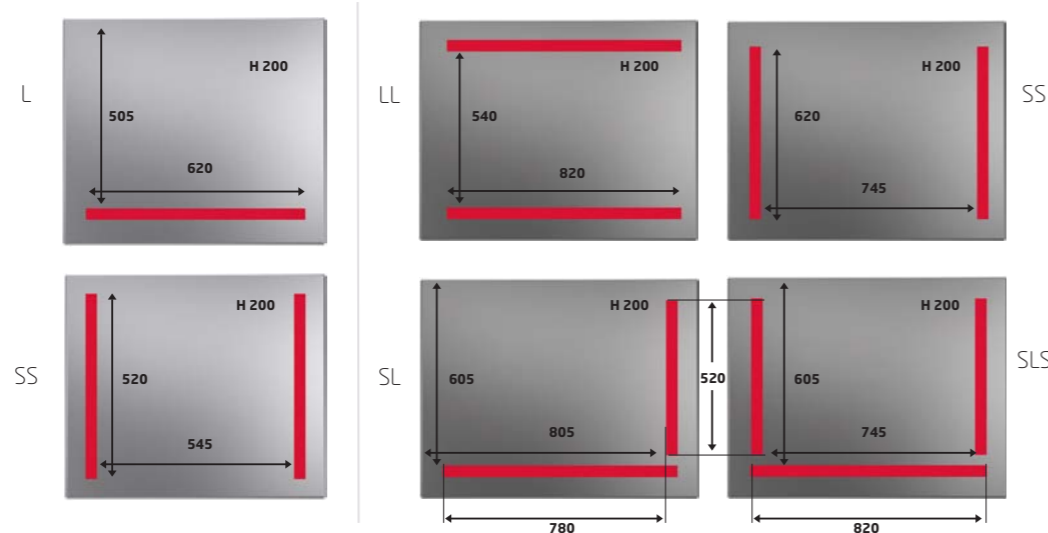
STAINLESS STEEL COVER | FLAT WORKING SURFACE

Seal	Double
Machine dimension mm	1180 x 860 x 1140
Standard voltage	400 - 3 - 50 Hz
Digital Time Control	10 programs
Pump Capacity	100 m3
Average weight	360 kg

Filler plates / Liquid filler plates	Yes
Sensor control	Sensor / H ₂ O
Soft Air	Soft Air
Seal	Trenn (pre-cut) / 1-2 / Bi-Active
Gas	Gas
Pump upgrade	160 or 300 m3
Voltage according to Pump upgrade	400 - 3 - 50 Hz



Seal configurations



Mobile Range



Specifications

M70

M80

ALUMINUM COVER | CHAMBER

Seal	Double	Double
Machine dimension mm	700 x 680 x 1040	910 x 830 x 1060
Standard voltage	400 - 3 - 50 Hz	400 - 3 - 50 Hz
Digital Time Control	10 programs	10 programs
Pump Capacity	40 m ³	63 m ³
Average weight	160 kg	228 kg

Options

Filler plates / Liquid filler plates	Yes	Yes
Sensor control	Sensor / H ₂ O	Sensor / H ₂ O
Soft Air	Soft Air	Soft Air
Seal	Trenn (pre-cut) / 1-2 / Bi-Active	Trenn (pre-cut) / 1-2 / Bi-Active
Gas	Gas	Gas
Pump upgrade	63 m ³	100 m ³
Voltage according to Pump upgrade	400 - 3 - 50 Hz	400 - 3 - 50 Hz

Seal configurations

