



SPARE PART LIST

Spare Part ItemCode	Item name.	PictureId	Price.	Curr.
9099.00001.85	TERMOSTAT LIMIT RESETSİZ 75 C (MERCİMEK TIP) T1/11-75/55C			
2710.F0024.03	OBY 35/40 Wash Collector			
6262.00026.00	Air Trap			
2710.00502.000	OBY 35 ALT SASE (EGİMLİ KAZAN) TOPLANMIS			
2710.00502.31	OBY 35 SEPET OTURAGI SAG			
6262.00021.47	HOSE 1/2 30 CM			
6214.00001.06	M12 NUT			
6262.00001.07	DOOR LOCK KIT FOR DISHWASHER MODEL OBY500DPLUS			
6221.00001.020	Clamp 12x20			
2710.F0502.00	BOILER TANK FOR OBY 500B			
6228.00001.01	ORING Q4*1,5MM (BARDAK YIKAMA)			
6262.00008.00	3/4 PLASTIC VALVE			
2710.00502.49	FRONT DOOR SUPPORT ARC PART - RIGHT			
2710.00502.32	OBY 35 SEPET OTURAGI SOL			
2710.00502.06	OBY 35 KABIN ON KAPAK (BASKILI) TOPLANMIS			
6234.00001.019	TERMOSTAT 30-120°C FSTB WYG120S-061			
6221.00001.121	Hose clamp 20-32 mm			
6262.00021.163	Water discharge hose double sided 200cm			
6221.00001.020	Clamp 12x20			
6262.00001.02	OBY 35/40/50 ON KAPAK (BASKILI) KAPI MENTESE STOPERI (POLYAMID)			
6262.00033.32	BARDAK YIKAMA/DURULAMA FISKIYE (3 GOZLU) KOMPLE PLAS. (YENI)			
6262.00041.03	NAVEL AXLES			
2710.00502.04	OBY 500B 35x35 ELEKTRİK PANO TOPLANMIS			
6231.00019.47	ROLE ZAMAN EMKO-BYM-02 (YESİL RENK - 35 / 40 / OKY)			
6234.00001.21	SAFETY THERMOSTAT 150 C MONOPHASE SP-031 AT/3			
6234.00001.037	TERMOSTAT AYNA+KAPAK 30-120 C (EGO)			
2710.00502.490	FRONT DOOR SUPPORT ARC PART-LEFT			
6262.00001.010	Hinge Pin			
2710.F0502.10	PANO TOPLANMIS OBY 500B BARDAK STANDART			
6214.00001.05	M10 hex nut			
2710.50109.B01	OBY 35/40/50 TERMOSTAT BAGLANTI SACI			
6222.00027.01	CEKVALF PLASTİK DN20 (20MM 3/4" PLASTİK VENTİL İCİN)			
6262.00062.08	Washing tank heater cover			
9999.B08RE.00	RINS-AID PUMP			
6262.00007.01	PRESSURE SWITCH 45-20			
6262.00021.07	Pressure switch connection hose Q8*4mm			
6262.00047.03	Dosing pumps hose spring			
2710.00502.09	Top Cover - Mechanical			
2710.00502.29	Back Cover			
6262.00021.12	3/4" Water Inlet Hose			
2710.00502.47	Basement lower cover			
2710.00502.39	Basement front cover			
6262.00047.03	Dosing pumps hose spring			
6259.00003.043	Cable Gland			
6232.00011.41	Button LAS1-AWY-11ZT BLUE 220V IP65			
9099.00011.42	BLUE BUTTON KPB22			
2710.00502.03	OBY 500B 35x35 UST DURULAMA KOLU TOPLANMIS			
2710.00502.48	hinge fitting			
6262.00041.04	YIKAMA MILİ SAPKASI M8*10mm 6K INOX			
2710.00502.38	OBY 35/40/50 PARLATICI/DETERJAN BAGLANTI SACI			
6218.00002.204	M10 VIDALI PERCİN 6K SAPKALI			
6262.00011.03	M10*40 KUCUK AYARLI AYAK SİYAH BARDAK YIKAMA (KOD.90650102100)			
9099.ZF121.01	LGB POMPA ZF 121 SX (170 LT / KAFASI DONDURULMUS)			
6262.00021.91	OBY 35 YIKAMA POMPASI EMİS FİLTRESİ BAGLANTI HORTUMU (EGİMLİ KAZAN)			
6262.00021.23	Rinsing hose			
9099.01000.14	Washing Tank heater 2000W 230V (for sloping washing tank)			
6226.00004.040	GASKET-BLACK(EXT DIM Ø69/ DIM IN Ø55/K.4_5MM EPDM)			
6226.00006.01	detergent tank connection ring gasket for PG7 blind stop			
6213.00001.01	M4x10 INOX PAN HEAD CROSS RECESSES SCREW			
6221.00001.120	CLAMP 25*42 MM			
6214.00013.16	M5 nylon insert lock nut			
6226.00010.01	Klinger gasket 1/2"			
6241.00007.02	cable terminal			
6262.30666.013	Rinse-aid connection check valve			
6262.00021.92	OBY 35 YIKAMA POMPASI ORTA GOBEK BAGLANTI HORTUMU (EGİMLİ KAZAN)			
2710.00502.130	Basement conection plate	12		
2710.00502.140	Main body	2		



Cumhuriyet Mah.Hadımköy Yolu Caddesi No:8 1Nolu Bağımsız Bölüm
Büyüçkekmece İstanbul VD: BüyükMükellefler VKN: 7080013433

Phone.: 00 90 212 8867800

Fax No: 00 90 212 8867809

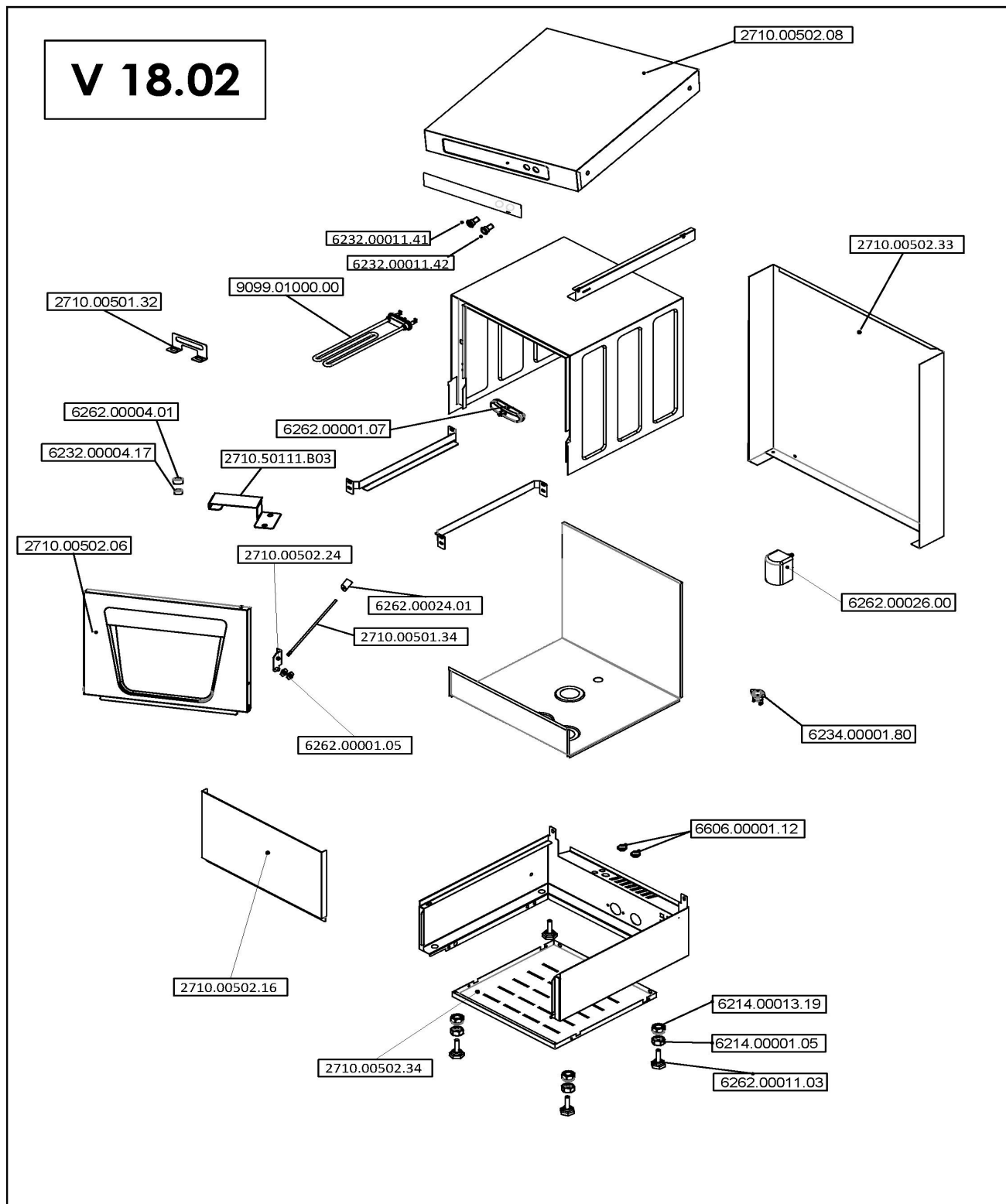
Page 2

073M.11000.AD

GLASSWASHER MECHANICAL (35 X 35) OBY 35M PD

Version No: V20.05

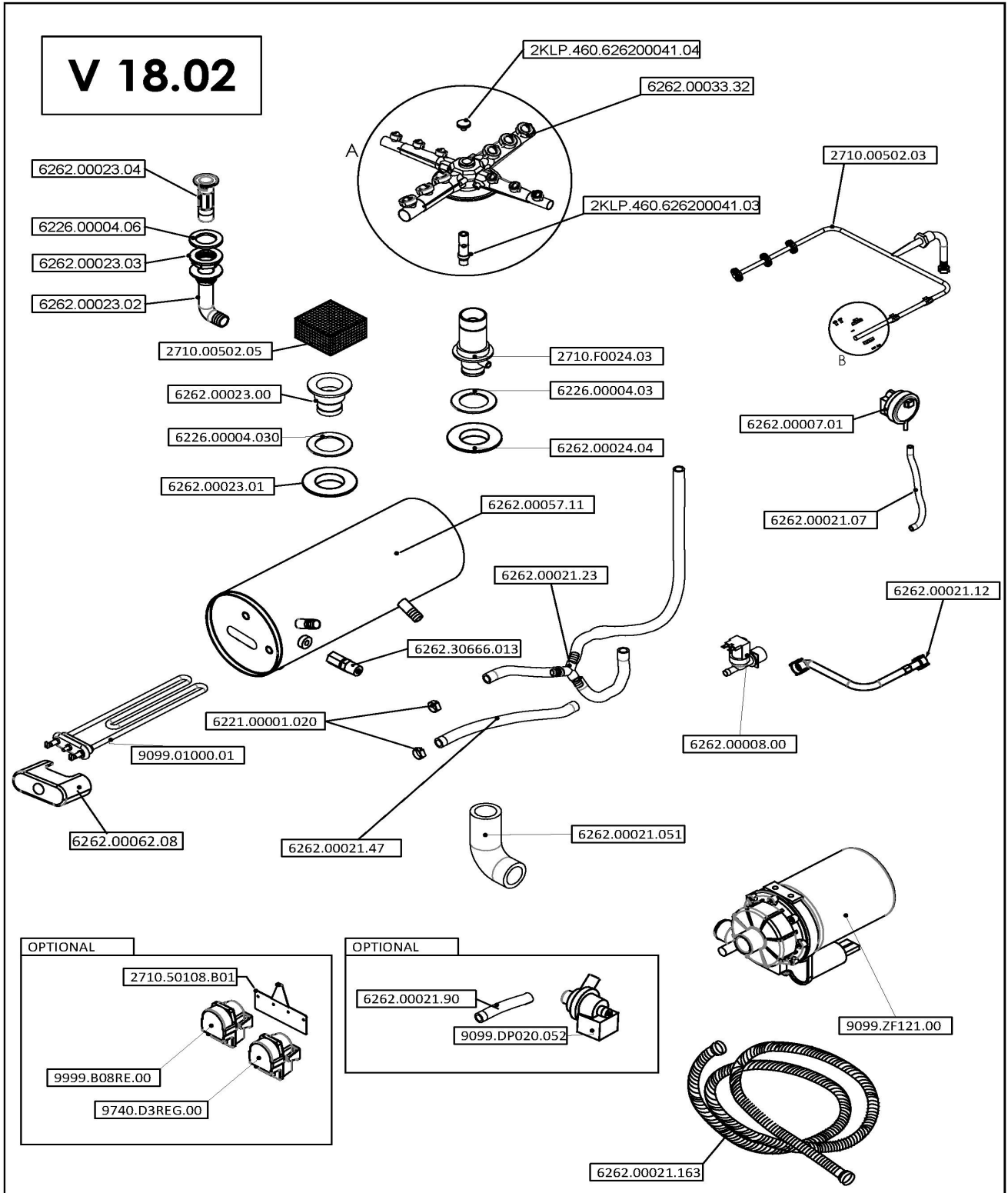
2710.00502.120	Basement	3
6232.00005.10	Magnetic switch	33
6262.00001.05	500 T/S KAPAK MENTESE REKORU INOX	44
6262.00031.01	DURULAMA FISKIYESI UST PARCASI	49 A
6262.00031.00	DURULAMA FISKIYESI ALT PARCASI	49 B
6214.00001.01	NUT M4	49 E
9740.D3REG.00	DETERGANT PUMP	53
2710.F0001.01	door type Magnet with cover	60



R&D	NAME	SIGNATURE	DATE	MATERIAL	VERSION NO	OZTI	
DRAWING	S. GURCU		30.04.2019		V 18.02	PART NAME: OBY 35M PDRT MECHANICAL GLASSWASHER DETAILS EXPLODED VIEW	
CONTROL	S. GURCU		30.04.2019				
CONSENT	M.HACI		30.04.2019	THICKNESS	REVISION		
				MEASUREMENTS MILIMETER	WEIGHT (gr.)	SCALE	PIC. NO



35M PDRT MECHANICAL GLASSWASHER DETAILS EXPLODED VIEW GROUP ITEMS	
Item Code	Designation
2710.00502.08	Top cover
6232.00011.41	Button
6232.00011.42	Button
2710.00502.33	Back panel
2710.00502.16	Lower front panel
2710.00502.34	Bottom panel
2710.00502.24	Door hinge
2710.00501.32	Resistance holding plate
6262.00001.07	Kit cover lock
6232.00004.17	Magnet
6262.00004.01	Magnet Cap
6262.00011.03	Adjustable feet
6214.00013.19	M10 nylon insert lock nut
6214.00001.05	M10 nut
6606.00001.12	Grommet rubber Ø8x16
2710.00502.06	Door Group
6262.00026.00	Air trap (Plastic)
9099.01000.00	Tank heating resistance
2710.50111.B03	Heat Transfer Plate
2710.00501.34	Metal rod
6262.00024.01	Metal rod stopper (plastic)
6262.00001.05	Door hinge metal part
6234.00001.80	Tank safety thermostat

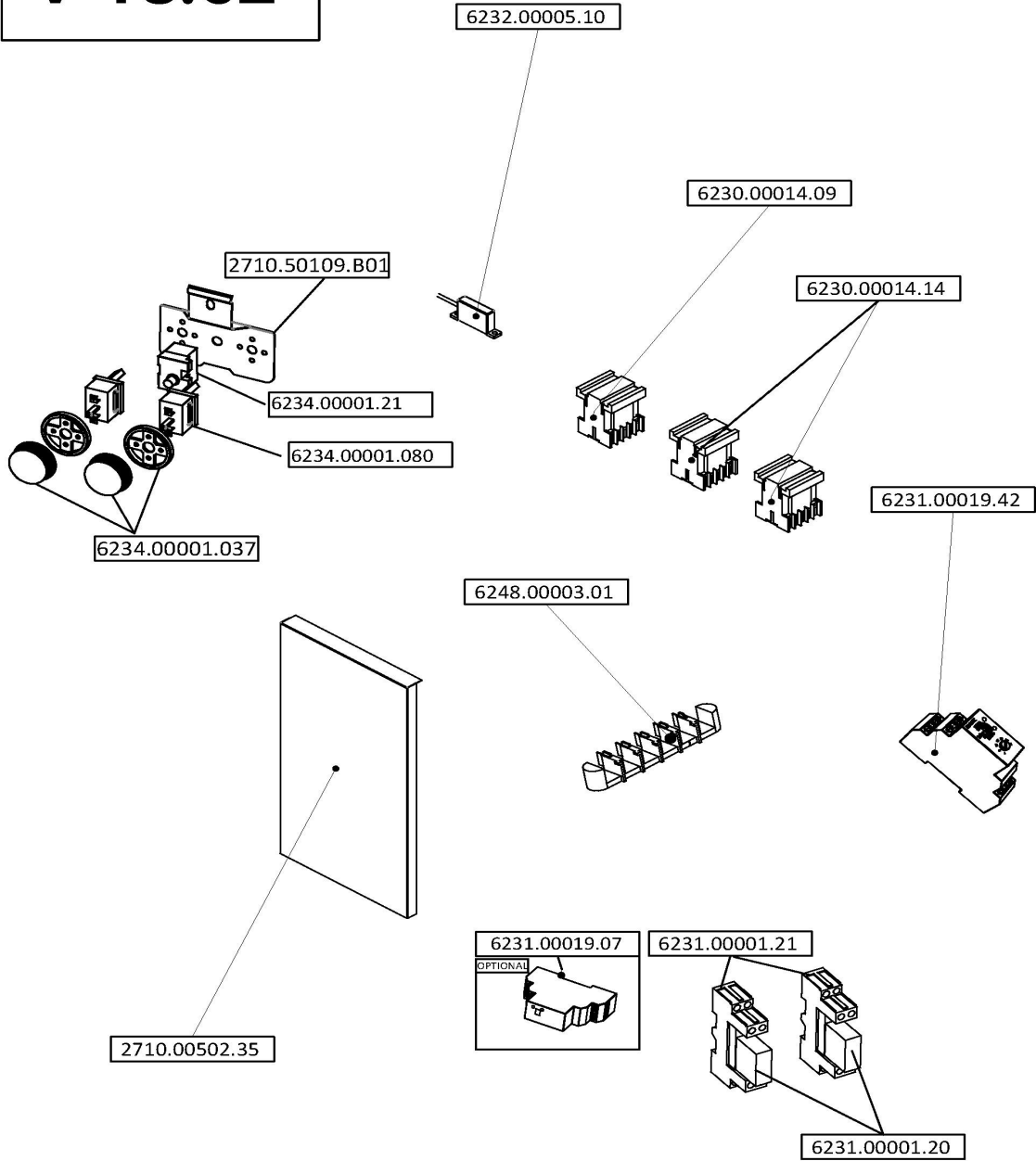


R&D	NAME	SIGNATURE	DATE	MATERIAL	VERSION NO	
DRAWING	S. GURCU		30.04.2019		V 18.02	
CONTROL	S. GURCU		30.04.2019			
CONSENT	M. HACI		30.04.2019			
				THICKNESS	REVISION	PART NAME: OBY 35M PDRT MECHANICAL GLASSWASHER DETAILS EXPLODED VIEW
				WEIGHT (gr.)	SCALE	PIC. NO

OZTI



35M PDRT MECHANICAL GLASSWASHER DETAILS EXPLODED VIEW GROUP ITEMS	
Item Code	Designation
2710.F0024.03	Connection Pipe for Bottom Nozzle
2710.50108.B01	Rinseaid&detergent dispenser holder plate
2710.00502.03	Rinsing arm
6221.00001.020	Hose clamp 12x20mm
6226.00004.03	Seal of Connection Pipe for Bottom Nozzle
6262.00007.01	Pressure switch
6262.00008.00	Solenoid valve
6262.00021.07	Pressure switch connection hose
6262.00021.12	Water inlet hose
6262.00024.04	Nut of Connection Pipe for Bottom Nozzle
6262.00023.00	Suction filter lower part
6262.00023.01	Suction filter Nut
2710.00502.05	Suction filter top part
6226.00004.030	Suction Filter seal
6262.00021.23	Rinsing hose
6262.00033.32	Washing&Rinsing plastic arms
6262.00057.11	Boiler tank
6262.30666.013	Rinse aid inlet check valve
6262.00021.051	Elbow reducing hose
6262.00021.47	Hose (water inlet valve-boiler)
9099.01000.01	Boiler heating resistance 3 kW
6262.00062.08	Washing tank heater cover
9099.ZF121.00	Washing pump
9740.D3REG.00	Detergent aid dispenser
9999.B08RE.00	Rinse aid dispenser
2KLP.460.626200041.03	Navel axle
2KLP.460.626200041.04	Screw
9099.DP020.052	Drain pump
6262.00021.90	Hose (drain pump - Drain unit plastic part (bottom))
6262.00021.163	Drain hose
6262.00023.02	Drain unit plastic part (bottom)
6262.00023.03	Drain unit plastic part nut (bottom)
6262.00023.04	Drain plug
6226.00004.06	Drain unit plastic part seal

V 18.02

R&D	NAME	SIGNATURE	DATE	MATERIAL	VERSION NO	OZTI	
DRAWING	S.GURCU		30.04.2019		V 18.02		
CONTROL	S.GURCU		30.04.2019			THICKNESS	REVISION
CONSENT	M.HACI		30.04.2019			MEASUREMENTS MM.	SCALE
						WEIGHT (gr.)	PIC. NO



35M PDRT MECHANICAL GLASSWASHER DETAILS EXPLODED VIEW GROUP ITEMS	
Item Code	Designation
6232.00005.10	Magnetic Switch
6230.00014.09	Contactora DILEM-10 MOELLER 4 KW
6230.00014.14	Contactora DILEM-12-01 MOELLER
6231.00019.42	Timer Relay INTER RR-W5TMS
6231.00019.07	Timer Relay INTER RR-V-03DK
6231.00001.21	Relay
6231.00001.20	Relay socket
6248.00003.01	Electric inlet terminal
2710.50109.B01	Termostat Holder Plate
6234.00001.21	Safety Thermostat
6234.00001.080	Thermostat
6234.00001.037	Thermostat cover
2710.00502.35	Electrical Panel Plate



35M PDRT MECHANICAL GLASSWASHER DETAILS EXPLODED VIEW GROUP ITEMS	
Item Code	Designation
6262.00005.00	Collector plastic part
6262.00033.000	Washing arm (without nut&nozzle)
6262.00033.01	Collector (washing&rinsing)
6262.00033.02	Washing arm nut
6262.00033.03	Washing arm nozzle
6262.00033.200	Rinsing arm (without nut&nozzle)
6262.00033.21	Rinsing arm nozzle
6262.00033.22	Rinsing arm nut
6262.00031.00	Rinsing nozzle lower part
6262.00031.01	Rinsing nozzle top part
6228.00001.01	O-ring
6213.00001.01	Screw
6214.00001.01	Nut