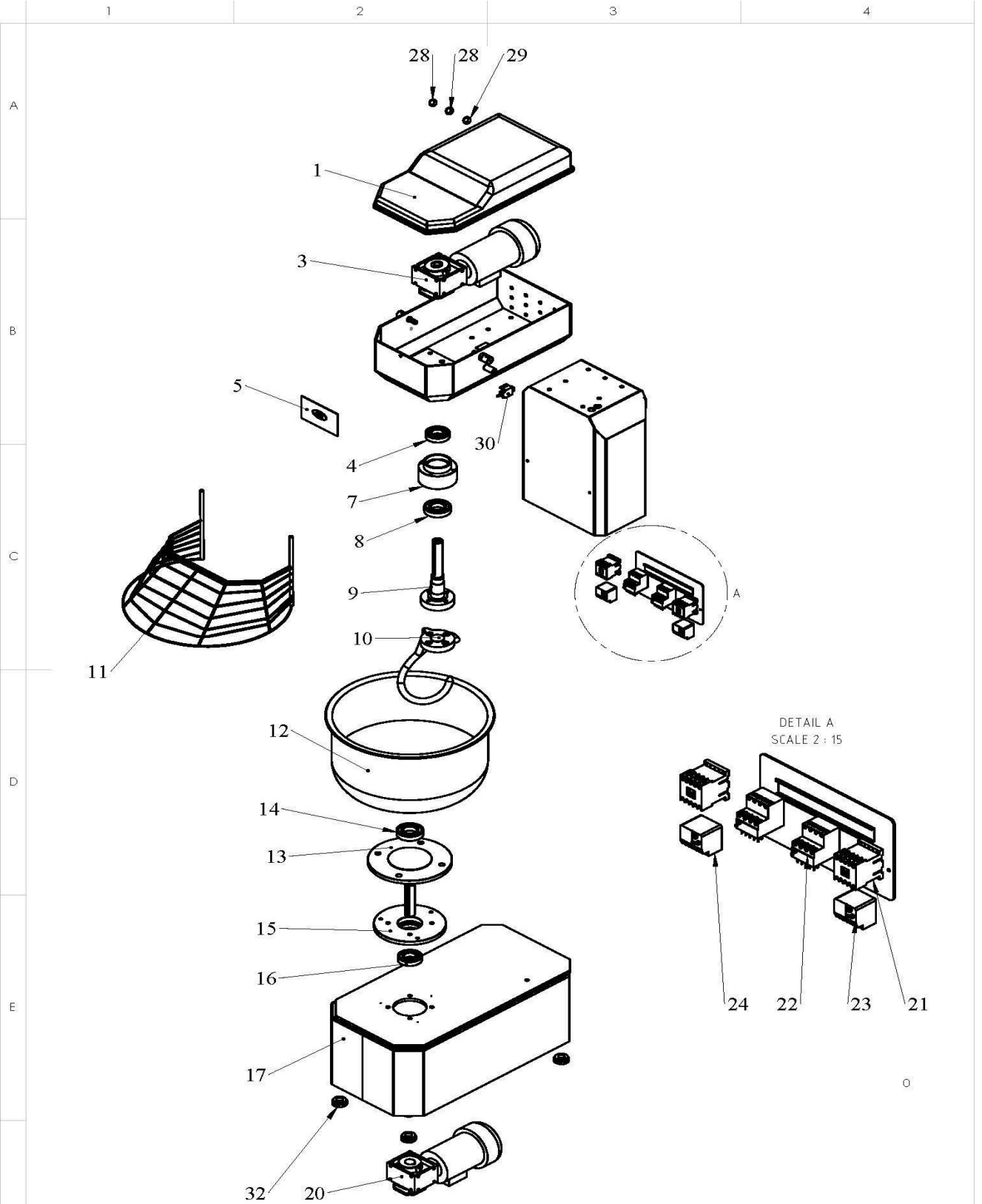




SPARE PART LIST

Spare Part ItemCode	Item name.	PictureId	Price.	Curr.
2820.00030.18	PLASTIC COVER FOR HYM30-50	1		
2820.00030.05	KNEADING TOOL FOR HYM30	10		
2820.00030.19	SAFETY CAGE FOR HYM30	11		
2820.00030.07	STAINLESS STEEL BOWL FOR HYM30	12		
2820.00030.08	LOWER GEARBOX SHAFT FOR HYM30	13		
6211.00223.01	BEARING 6207 2 RS C0	14		
2820.00030.09	LOWER GEARBOX SHAFT BEARING FOR HYM50	15		
6261.00029.02	GEARBOX 0,37Kw 15RPM EV63	20		
6230.00014.12	MINI CONTACTOR DILEEM-10 XTMC6A10 3KW MOELLER	21		
6230.00020.03	AUXILIARY CONTACTOR DILEM 22 MOELLER	22		
6233.00016.11	THERMIC RELAY 1,6-2,4	23		
6233.00016.13	THERMIC RELAY 4-6 (ZE-6) MOELLER(MINI)	24		
6232.00010.32	BUTTON START AA31 SMCX	28		
6232.00010.31	BUTTON STOP AA42 SMCX	29		
6261.00029.03	GEARBOX 06-09KW 60-120rpm EV063*3 B09	3		
6232.00006.00	SWITCH	30		
6257.00016.01	POWER SUPPLY CORD 5x2,5 H07RNF	31		
6261.00012.00	PLASTIC PART OF HYM30-50 BASE	32		
6211.00223.00	BEARING 6207 ZZ C0	4-16		
2820.00030.03	UPPER GEARBOX SHAFT BEARING FOR HYM30-50	7		
6211.00224.00	BEARING 6208 2 RS C0	8		
2820.00030.04	UPPER GEARBOX SHAFT FOR HYM30-50	9		
6248.00022.00	RAIL FOR TERMINAL ST	TRN1		



F	R&D	İSİM	İMZA	TARİH	MATERIAL	TOLERANS
	ÇİZEN	A.YILMAZ		04.02.2016		DIN 7168 ORTA
	KONTROL	M.HACI		04.02.2016		
	ONAY	M.HACI		04.02.2016	KALINLIK	REVİZYON 1
					AĞIRLIK (gr.)	ÖLÇEK 1:15

PARÇA ADI:
HAMUR YOÇURMA MAKİNASI 30 KG MEKANİK KONTROL PANELLİ
T.RESİM NO
0820.00030.11

öztiryakiler