




Dati Tecnici - Specifications

	cond	comp. W	ABS. W	A / Fuse	Kwh/100Kg	l / h	kg	Lbs	kg	Lbs	Ton CO2 equiv.
E60 A		1250	570	10	27,1	5,81	52	114	60	132	0,27
E60 W		1250	520	10	19,13	65,4	50	110	58	128	0,29




Produzione Ghiaccio - Ice Production

Raffreddamento ad aria - Air Cooled Unit

Temp. Aria Air Temp.		Temp. Acqua / Water Temp.			
°C	32°	21°	15°	10°	
°F	90°	70°	60°	50°	
10°	53	57	59	60	
50°	118	125	130	132	
21°	49	52	54	55	
70°	108	115	119	121	
32°	40	42	44	45	
90°	88	93	96	99	
38°	35	37	38	39	
100°	76	81	83	85	

Raffreddamento ad acqua - Water Cooled Unit

Temp. Aria Air Temp.		Temp. Acqua / Water Temp.			
°C	32°	21°	15°	10°	
°F	90°	70°	60°	50°	
10°	48	53	56	58	
50°	106	117	123	128	
21°	47	51	54	56	
70°	104	112	119	123	
32°	45	49	52	54	
90°	99	108	115	119	
38°	44	48	50	52	
100°	97	106	110	115	



PANNELLO DI CONTROLLO - CONTROL PANEL

Rosso: Allarmi
Red: Alarm state

Verde: Stato Macchina
Green: Machine state



Interruttore On/Off
Switch On/Off

Pulsante Reset
Reset Button

CAPACITA' DEPOSITO - BIN CAPACITY

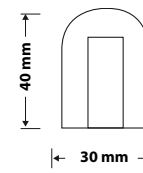
28 Kg - 62 lbs 1648 pcs

DIMENSIONI - DIMENSIONS

LxPxH (mm)
600 x 585 x 956

WxDxH (inch)
23 10/16" x 23 1/16" x 37 10/16"

TIPO GHIACCIO - ICE TYPE



17g
PESO GHIACCIO
WEIGHT ICE



35
PZ/CICLO
PCS / CYCLE

CONDIZIONI USO-OPERATING REQUIREMENTS

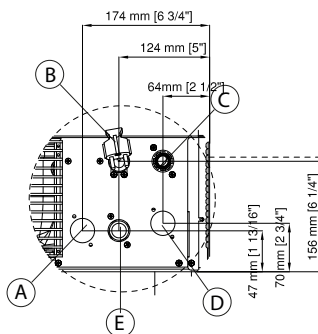
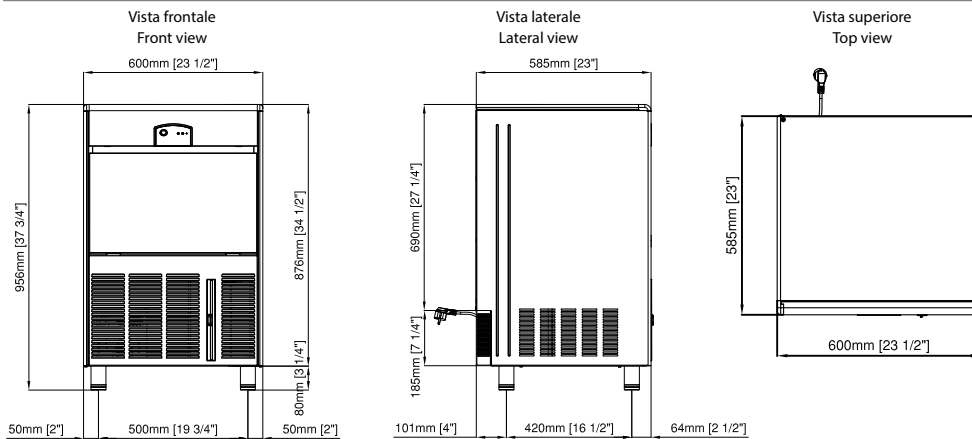


220-240/1/50Hz

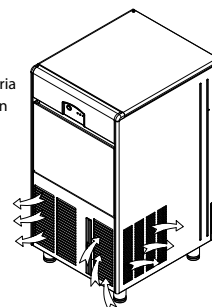


R134a GWP-1430

MIN	MAX
10°C (50°F)	40°C (104°F)
5°C (41°F)	35°C (95°F)
- 10 %	+ 10 %
1 Bar (14 psi)	5 Bar (70 psi)



Circolazione aria
Air circulation



- (A) OPTIONAL - Entrata acqua condensatore ad acqua - 3/4"gas
OPTIONAL - Water inlet connection water condensation - 3/4"gas
- (B) Ingresso alimentazione elettrica
Electrical cable supply
- (C) Attacco scarico acqua diam. 20 mm
Water outlet connection

- (D) Uscita acqua condensatore ad acqua diam. 20 mm
Water outlet connection water condensation
- (E) Attacco entrata acqua - 3/4"gas
Water inlet connect - 3/4"gas